



SUBJECT:	Music
PAPER NUMBER:	Part I – Musicianship
DATE:	27 th May 2022
TIME:	35 minutes

CANDIDATE'S PAPER

ALL exercises are to be answered.

SECTION 1 – SIGHT SINGING

1. Sing **THREE** intervals from any note played by the examiner.

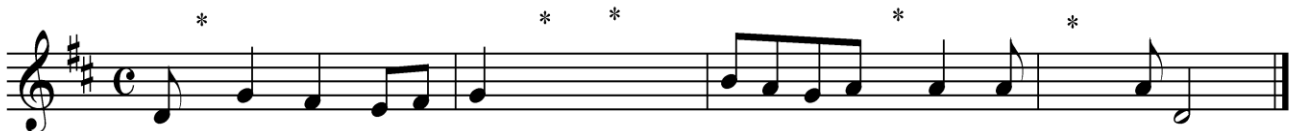
(Total: 6 marks)

2. Clap the rhythm of a short melodic phrase.

(Total: 4 marks)

SECTION 2 – AURAL PERCEPTION

1. Write down the occasional missing notes with their relative time-values, marked with an asterisk (*), in this passage. The excerpt will be played **FOUR** times.



(Total: 10 marks)

2. Identify the modulation of this two-part melodic phrase in a major or minor key. A correct description of the modulation is expected; for example: dominant, relative major, relative minor, etc. The excerpt will be played **TWICE** and will be preceded by the tonic chord.

Modulation to: _____

(Total: 10 marks)

DO NOT WRITE ABOVE THIS LINE

Rough paper

A series of horizontal lines for writing, organized into ten groups of four lines each, providing a structured area for rough work.



SUBJECT:	Music
PAPER NUMBER:	Part II – Harmony, Counterpoint, History & Analysis
DATE:	2 nd June 2022
TIME:	4:00 p.m. to 6:20 p.m.

ALL exercises are to be answered.

SECTION 1 – HARMONY AND COUNTERPOINT

HARMONY

1. Add A.T.B. to the given soprano part. Your answer may include use of non-harmonic tones and secondary dominants.

Musical notation for exercise 1, measures 1-3. The key signature is two sharps (F# and C#) and the time signature is 3/4. The soprano part consists of quarter notes: G4, A4, B4, C5, B4, A4, G4, F#4, E4, D4, C4. The bass part is empty.

Musical notation for exercise 1, measures 4-7. The key signature is two sharps (F# and C#) and the time signature is 3/4. The soprano part consists of quarter notes: G4, A4, B4, C5, B4, A4, G4, F#4, E4, D4, C4. The bass part is empty.

(Total: 20 marks)

Please turn the page.

COUNTERPOINT

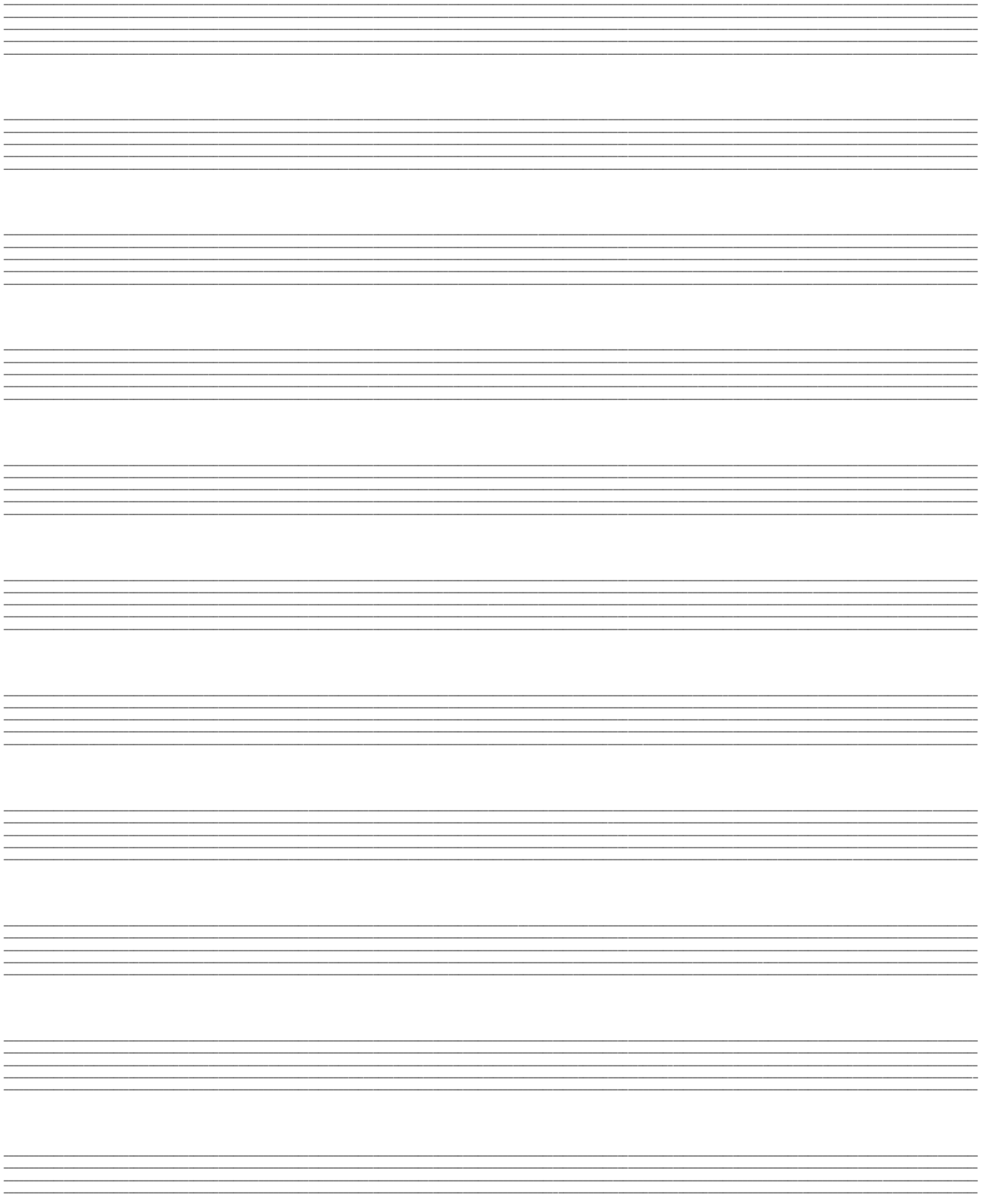
2. Complete the following passage in two-part counterpoint in eighteenth-century style:

Bach

The image shows a musical score for a two-part counterpoint exercise in G minor, 3/8 time, by J.S. Bach. The score is presented in three systems, each with a grand staff (treble and bass clefs). The first system shows the beginning of the piece, with the bass line starting on G4 and the treble line starting on G4. The second system starts at measure 4, with the bass line continuing and the treble line starting on G4. The third system starts at measure 7, with the bass line continuing and the treble line starting on G4. The exercise is in G minor, indicated by two flats in the key signature.

(Total: 20 marks)

Rough paper



The page contains 12 sets of horizontal ruled lines, each set consisting of four parallel lines, providing a grid for rough work.



SUBJECT:	Music
PAPER NUMBER:	Part III – Performance/Composition
DATE:	27 th May 2022

Choose **ONE** Section only:

SECTION A – PERFORMANCE

You are required to perform a short recital which is approximately 15 minutes long. The choice of programme is at your discretion.

OR

SECTION B – COMPOSITION

Subsequent to having submitted **TWO** copies of a short composition of a minimum duration of 3 minutes for any solo instrument to MATSEC or the Examinations Department Victoria, Gozo, by Friday 22nd April 2022, you are now required to sit for an interview related to the content of the submitted work and/or your musical interests.

(Total: 25 marks)