

MATRICULATION AND SECONDARY EDUCATION CERTIFICATE EXAMINATIONS BOARD  
UNIVERSITY OF MALTA, MSIDA

**SECONDARY EDUCATION CERTIFICATE LEVEL**

**MAY 2016 SESSION**

---

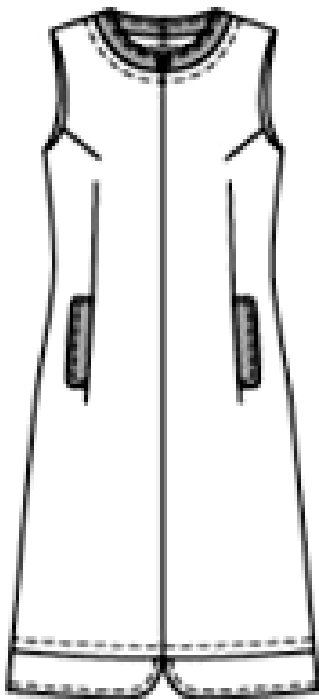
SUBJECT:	<b>Textiles and Design</b>
PAPER NUMBER:	I
DATE:	3 <sup>rd</sup> May 2016
TIME:	9:00 a.m. to 11:05 a.m.

---

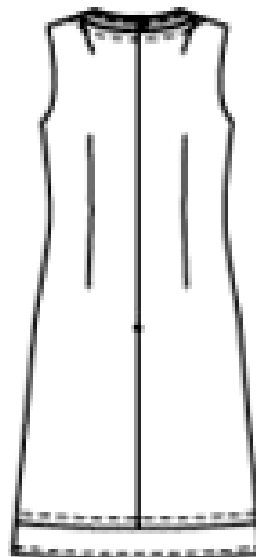
Answer **ALL** questions.

1. Since the early 1990s, the awareness and demand for vintage clothing has increased drastically. The following dress was in fashion during the 1960s.

Front View



Back View



- a) Give **TWO** reasons why vintage clothing increase in value.

i. \_\_\_\_\_

ii. \_\_\_\_\_

(2 marks)

b) In the space provided, draw the pattern pieces required to make a replica (copy) of the dress.

Front	Back	Neck Facing
Pocket		Hem

(5 marks)

c) The dress is made from two contrasting fabrics. Using the pattern pieces drawn in part (b), draw the two cutting layouts for the dress on two 1.5m wide fabrics in the spaces below.

(6 marks)

i. Label the selvedge and fold on each fabric below.

(2 marks)

Main fabric

Contrasting fabric

d) Why is contrasting fabric used when designing clothing?

\_\_\_\_\_ (1 mark)

e) Name the **TWO** pattern pieces of the dress which are made of contrasting fabric.

\_\_\_\_\_ (1 mark)

f) Suggest **ONE** colour and **ONE** type of fabric suitable for the dress and for the contrasting fabric. Give **ONE** reason for **EACH** answer.

Dress

• Fabric type: \_\_\_\_\_ Colour: \_\_\_\_\_

• Reason: \_\_\_\_\_  
\_\_\_\_\_

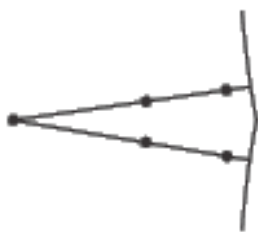
Contrasting fabric

• Fabric type: \_\_\_\_\_ Colour: \_\_\_\_\_

• Reason: \_\_\_\_\_  
\_\_\_\_\_

(1, 2, 1, 2 marks)

g) The following symbol (marking) was found on the front and back pattern pieces of the dress.



i. Name the pattern symbol.  
\_\_\_\_\_

(1 mark)

ii. Why is this pattern symbol used?  
\_\_\_\_\_

(1 mark)

h) Why is it important to transfer pattern symbols?

\_\_\_\_\_  
\_\_\_\_\_

(2 marks)

i) Pattern symbols can be transferred using the dressmaker’s carbon paper and tracing wheel. Suggest **ANOTHER** method of transferring pattern markings.

\_\_\_\_\_ (1 mark)

j) In **THREE** simple steps, explain how to use the dressmaker’s carbon paper and tracing wheel to transfer the pattern markings.

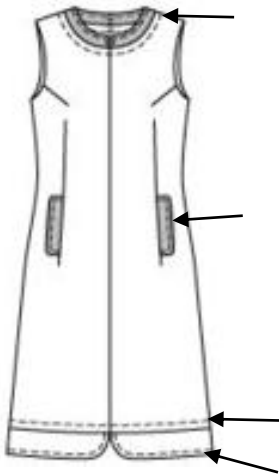
i. \_\_\_\_\_

ii. \_\_\_\_\_

iii. \_\_\_\_\_

(3 marks)

k) A particular sewing technique is used around the neckline, hem and pockets of the dress.



i. Name this sewing technique.

\_\_\_\_\_ (1 mark)

ii. Give **TWO** reasons for using this sewing technique.

- \_\_\_\_\_
- \_\_\_\_\_

(2 marks)

iii. Which type of machine stitching is used to carry out this sewing technique on the dress?

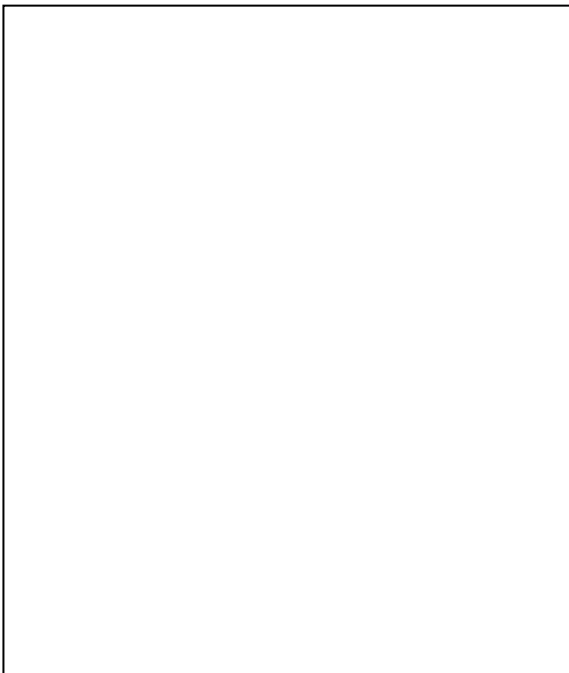
\_\_\_\_\_ (1 mark)

iv. Suggest **ONE** type of needle and **ONE** type of thread suitable for this technique. Give a reason for your answer.

- Type of Needle: \_\_\_\_\_
- Type of Thread: \_\_\_\_\_
- Reason: \_\_\_\_\_

(1, 1, 2 marks)

- l) Pattern adjustments (alterations) are sometimes necessary to make a garment fit properly. Draw, label and explain how to lengthen the front and back pattern pieces of the dress by 4cm.



---

---

---

---

---

---

---

---

---

---

(4, 5 marks)

- m) A replica (copy) of the dress is on sale in a leading department store. Suggest **ONE** occasion when the dress could be worn.

Occasion: \_\_\_\_\_ (1 mark)

- n) Suggest **ONE** type of body figure suitable for this type of dress. Give a reason for your answer.

• Type of body figure: \_\_\_\_\_

• Reason: \_\_\_\_\_

\_\_\_\_\_

(1, 2 marks)

*Please turn the page.*



iii) Suggest **TWO** other types of fasteners suitable for this coat.

- \_\_\_\_\_
- \_\_\_\_\_

(1 mark)

c) A flat collar was used for this coat.

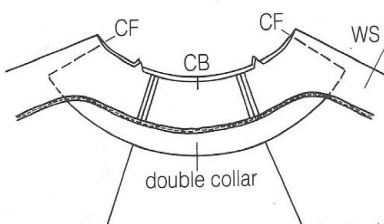
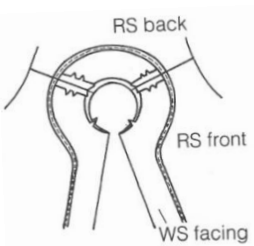
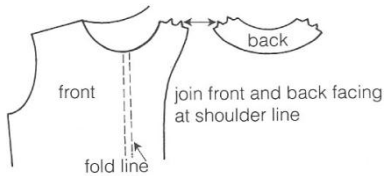


i) Explain how to cut out and make up this collar.

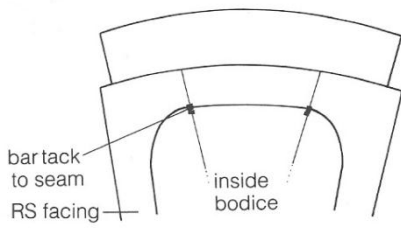
- \_\_\_\_\_
- \_\_\_\_\_
- \_\_\_\_\_
- \_\_\_\_\_

(4 marks)

ii) By referring to the diagram below, list the steps of how to attach this flat collar with the garment.



- \_\_\_\_\_
- \_\_\_\_\_
- \_\_\_\_\_



- \_\_\_\_\_  
\_\_\_\_\_  
\_\_\_\_\_  
\_\_\_\_\_

(4 marks)

iii) Mention another type of collar suitable for this coat. \_\_\_\_\_ (1 mark)

d) The coat is lined.

i) State **THREE** purposes of lining outfits.



- \_\_\_\_\_  
\_\_\_\_\_
- \_\_\_\_\_  
\_\_\_\_\_
- \_\_\_\_\_  
\_\_\_\_\_

(3 marks)

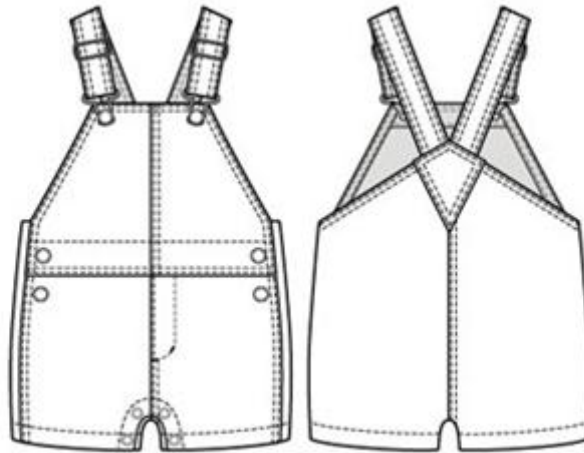
ii) Name **THREE** fabrics suitable for lining garments.

- \_\_\_\_\_
- \_\_\_\_\_
- \_\_\_\_\_

(3 marks)



3. The following is a dungaree outfit suitable for a young child.



a) A parent is planning to purchase the dungaree pictured above. Give **TWO** reasons why the style of the dungaree is suitable for a young child.

- \_\_\_\_\_  
\_\_\_\_\_
- \_\_\_\_\_  
\_\_\_\_\_

(2 marks)

b) The parent has asked your advice on:

i) whether to buy denim or polyester dungarees. Give the reason for your suggested choice of dungarees.

\_\_\_\_\_  
\_\_\_\_\_

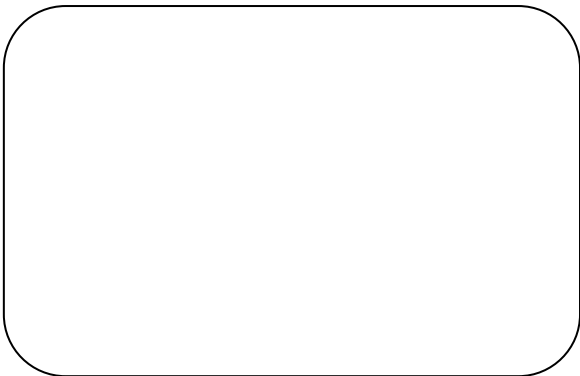
(2 marks)

ii) how to make the dungaree more attractive. Suggest **THREE** ways how this can be done.

- \_\_\_\_\_
- \_\_\_\_\_
- \_\_\_\_\_

(3 marks)

c) Draw and explain **ONE** way how you would carry it out.



- \_\_\_\_\_
- \_\_\_\_\_
- \_\_\_\_\_
- \_\_\_\_\_
- \_\_\_\_\_

(5 marks)

d) Name **TWO** items of clothing that can be worn with the dungarees.

---

(1 mark)

4. Capes have become a stylish way to cover up during the winter months.



**A**



**B**



**C**

a) i) Using the following figure template, draw an outfit that is suitable for **ONE** of the capes. (4 marks)

ii) Sketch also the shoes and accessories. (2 marks)

iii) Label **FOUR** fashion features on the outfit drawn. (2 marks)

b) Give the reason why the outfit is suitable to be worn with one of the illustrated capes.

---

---

---

(1 mark)

c) Name **TWO** colours which are suitable for the outfit.

---

---

(1 mark)



Blank Page

MATRICULATION AND SECONDARY EDUCATION CERTIFICATE EXAMINATIONS BOARD  
UNIVERSITY OF MALTA, MSIDA

**SECONDARY EDUCATION CERTIFICATE LEVEL**

**MAY 2016 SESSION**

---

SUBJECT: **Textiles and Design**  
 PAPER NUMBER: IIA  
 DATE: 4<sup>th</sup> May 2016  
 TIME: 9:00 a.m. to 11:05 a.m.

---

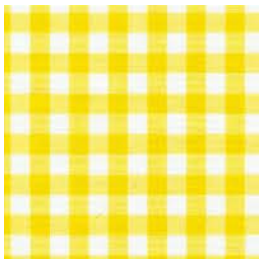

Answer **ALL** questions.

**Section A (40 marks)**

1. Weaving and knitting are two main ways in which yarns are made into fabric.

a) Gingham and denim are two fabrics made from cotton using different weaving methods. Complete the following table by answering the questions below.

- i) Name the type of weave used to make each fabric. (1, 1 mark)
- ii) List **TWO** properties for each type of weave. (2, 2 marks)
- iii) Name **ONE** other fabric made from the same type of weave. (1, 1 mark)

	<b>Gingham</b>	<b>Denim</b>
		
<b>Name of weave</b>	_____	_____
<b>Properties</b>	<ul style="list-style-type: none"> <li>• _____</li> <li>• _____</li> </ul>	<ul style="list-style-type: none"> <li>• _____</li> <li>• _____</li> </ul>
<b>Fabric</b>	_____	_____

iv) Choose **ONE** of the fabrics (gingham or denim) and draw the pattern produced by the weaving method in the box below.

Fabric Chosen: \_\_\_\_\_


(2 marks)

b) Knitting can be done by hand or machine.



i) This sweater was hand-knitted. Name the type of knitting method used to make this sweater.

\_\_\_\_\_  
(1 mark)

ii) List **TWO** positive characteristics of sweaters done by this type of knitting.

- \_\_\_\_\_  
\_\_\_\_\_
- \_\_\_\_\_  
\_\_\_\_\_

(2 marks)

iii) Explain why hand-knitted garments unravel easily.

\_\_\_\_\_  
\_\_\_\_\_

(1 mark)

iv) Name the other knitting method and give **ONE** example of an item that can be done by this method.

Knitting method: \_\_\_\_\_

Example: \_\_\_\_\_

(1 mark)

v) Name **ONE** disadvantage of this type of knitting method mentioned in (iv) above.

\_\_\_\_\_

\_\_\_\_\_

(1 mark)

2. Fabric finishes are applied to fabrics for several reasons.

a) Mention **TWO** reasons for applying finishes to fabrics.

- \_\_\_\_\_
- \_\_\_\_\_

\_\_\_\_\_

(2 marks)

b) In poor quality fabrics, a dressing is used to conceal their inferior quality. Explain what happens when dressed or 'sized' fabrics are washed.

\_\_\_\_\_

\_\_\_\_\_

(2 marks)

c) Many items of clothing used in industry are commercially treated with Proban®.

i) Why is this finish applied to specific items of clothing?

\_\_\_\_\_

(1 mark)

ii) Name **TWO** items of clothing that are worn by people working in specific risky occupations that may be commercial treated with a Proban® finish.

\_\_\_\_\_

(2 marks)

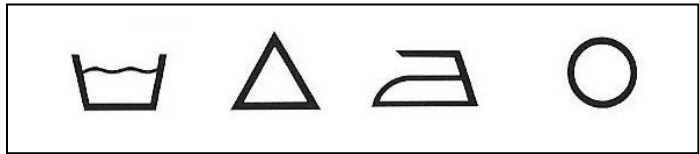
iii) Name **ONE** other treatment that can be applied commercially to achieve the same result.

\_\_\_\_\_

(1 mark)

*Please turn the page.*

iv) Complete the following care label found on an item of clothing treated with a Proban® finish.



(4 marks)

v) Why should a soapless detergent be used to wash clothing that is treated with Proban®?

---

---

(2 marks)

d) Flannellette is made by brushing cotton.

i) Explain the process of brushing cotton.

---

---

---

(3 marks)

ii) Describe **ONE** positive property of brushed cotton.

---

(1 mark)

iii) Describe **ONE** disadvantage of brushing cotton.

---

(1 mark)

e) The care label of garments with a water-repellent finish may indicate dry clean only.

Mention **TWO** steps to keep in mind when preparing clothes for dry cleaning.

- \_\_\_\_\_
- \_\_\_\_\_

(2 marks)



3. Your best friend received a colourful silk scarf on her birthday. The label indicates that it has been hand made.

a) List **TWO** ways how your friend can take care of the scarf when NOT wearing it.



- \_\_\_\_\_
- \_\_\_\_\_

(2 marks)

b) Explain the procedure she needs to follow to remove a stain from the silk scarf.

\_\_\_\_\_

\_\_\_\_\_

\_\_\_\_\_

(1 mark)

**Section B (60 marks)**

4. All sheer fabrics require special handling.

a) Mention **TWO** types of sheer fabrics.

\_\_\_\_\_

(2 marks)

b) What factors need to be considered in each of the following stages:

Stage	Factor to consider
Laying out fabric	
Cutting	
Marking	
Sewing	
Pressing	

(5 marks)

*Please turn the page.*

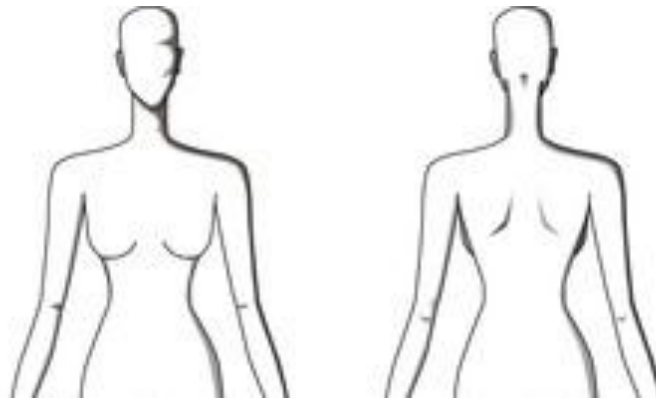
c) Mention **ONE** type of seam suitable for a straight seam and **ONE** seam for a curved seam.

- Straight seam: \_\_\_\_\_
- Curved seam: \_\_\_\_\_

(2 marks)

d) i) You plan to sew a sheer top for your friend to wear on her birthday. On the figure template below, draw the front and the back view of the sheer top. (3 marks)

ii) Label **FOUR** style features that provide texture and make the top less transparent. (4 marks)



**FRONT VIEW**

**BACK VIEW**

iii) Mention **TWO** hemming methods suitable for the designed top.

\_\_\_\_\_ (2 marks)

iv) Explain why the garment needs to hang for at least 24 hours before marking the hemline.

\_\_\_\_\_  
\_\_\_\_\_ (2 marks)

5. One way of adding design to fabrics is by using embroidery designs.

a) In the space given below, show how to embellish a cushion and a place mat using your embroidery skill. (2 marks)



Cushion



Place mat

- i) Label the decorations used, including the embroidery stitches. (2 marks)
- ii) Using diagrams, describe how to work **ONE** embroidery stitch mentioned in part (i).

Name of embroidery stitch: \_\_\_\_\_



Method of working the embroidery stitch:

- \_\_\_\_\_
- \_\_\_\_\_
- \_\_\_\_\_

(3 marks)

- iii) Name **TWO** small pieces of equipment used to work embroidery stitches. (1 mark)

\_\_\_\_\_

- iv) Name **TWO** colours that will be used for the cushion in part (i). (1 mark)

\_\_\_\_\_

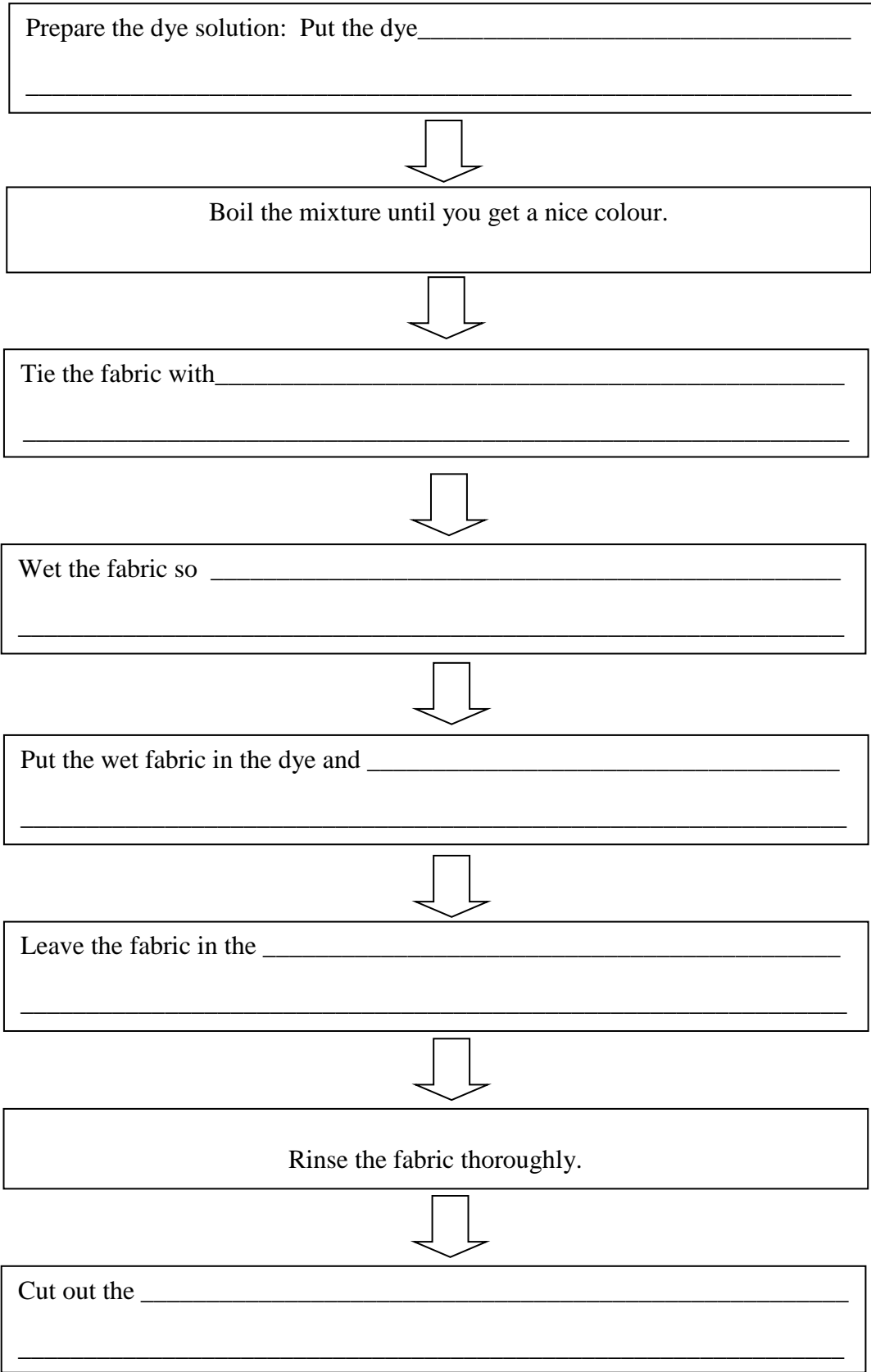
b) Another way of decorating fabrics is by using dyes.

- i) Tie and dye is a method of applying colour to decorate a fabric. How should you prepare the fabric before you start the process of tie and dye? Give a reason for your answer.

\_\_\_\_\_  
\_\_\_\_\_

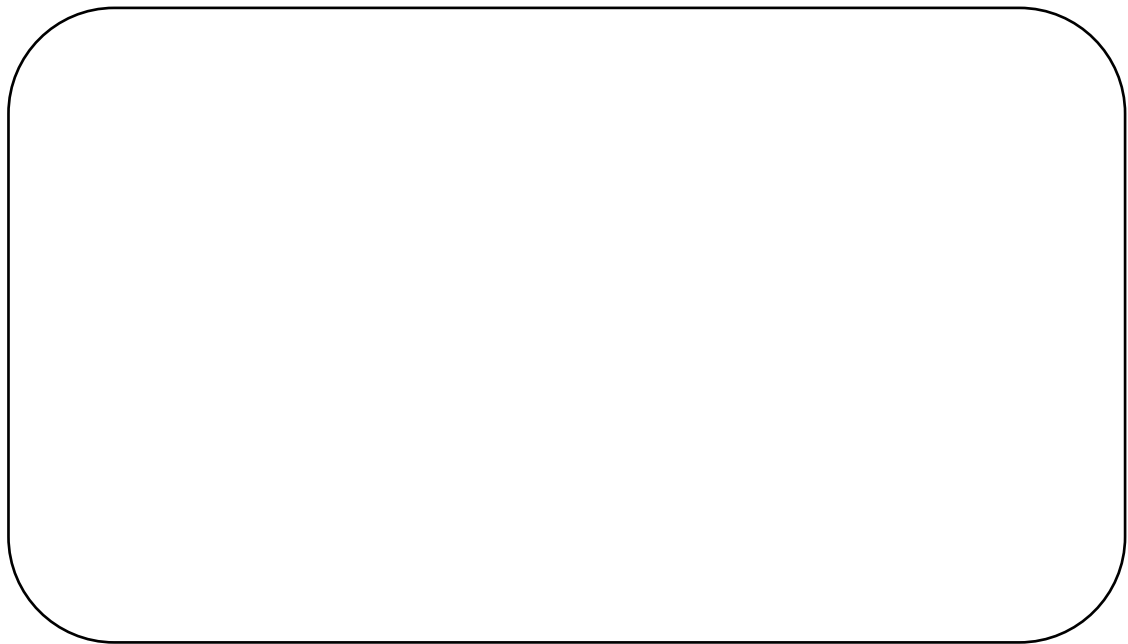
(1 mark)

ii) Complete the following flow chart with the steps of how to make tie and dye.



(6 marks)

iii) Draw and explain how you would add a tie and dye design pattern to the cushion.



---

---

---

---

---

(3 marks)

c) Mention **TWO** other methods, apart from tie and dye, which could be used to colour the place mat.

---

(1 mark)

6a) Your sister has lost weight and needs some advice on how to create a new wardrobe.

i) List **FOUR** steps that she should follow before buying clothes.

- \_\_\_\_\_
- \_\_\_\_\_
- \_\_\_\_\_
- \_\_\_\_\_

(4 marks)

ii) List **SIX** essential items of clothing she must have in her wardrobe.

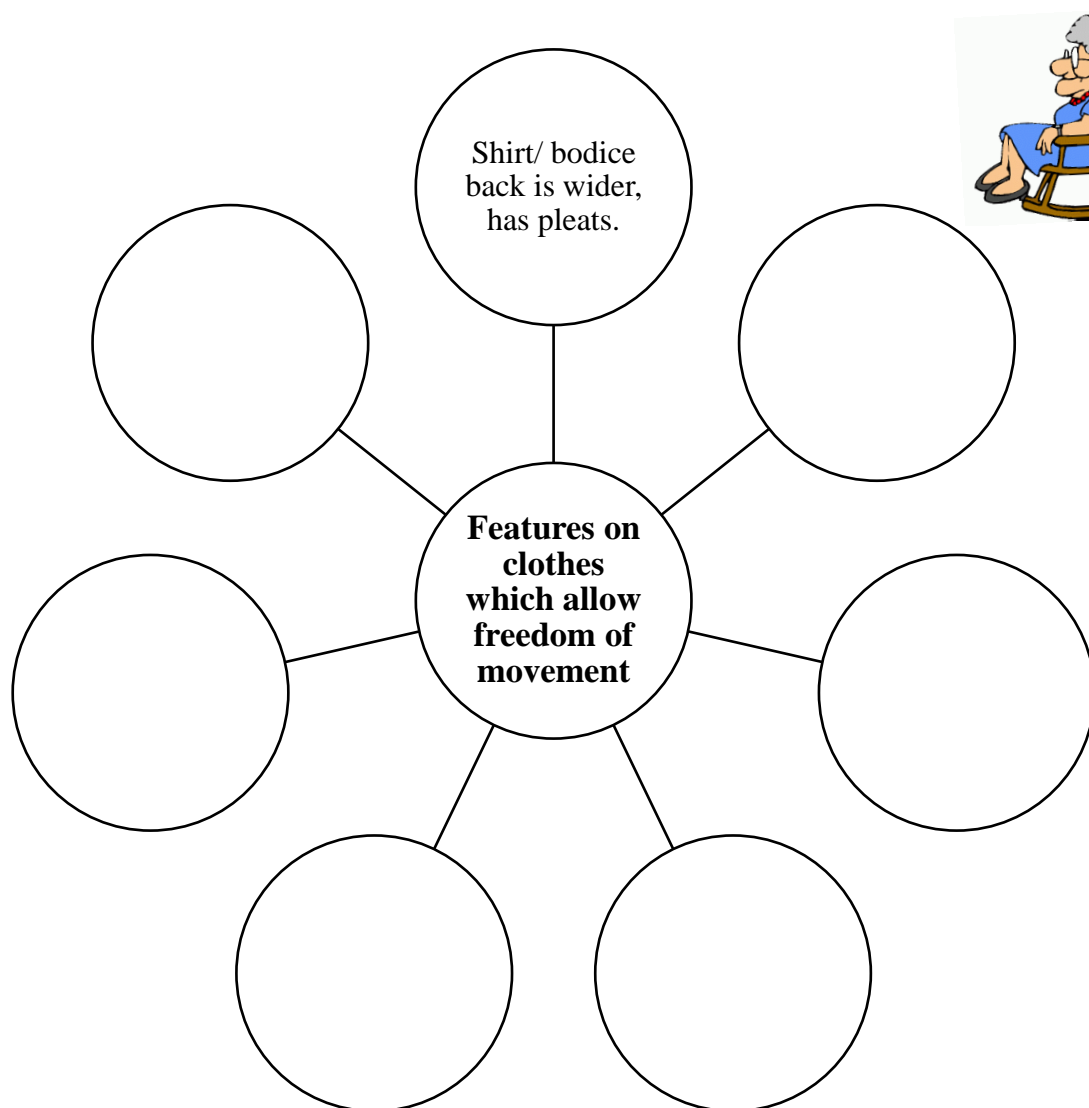
- \_\_\_\_\_
- \_\_\_\_\_
- \_\_\_\_\_
- \_\_\_\_\_
- \_\_\_\_\_
- \_\_\_\_\_

(3 marks)

b) Making decisions about clothing can increase independence for an elderly person.

i) Continue the following web-diagram by naming various features found on clothes which provide freedom of movement for elderly people. *One has been given as an example.*

(6 marks)



ii) Give **TWO** ideas on what an elderly person can wear for warm and cold environments.

- **Warm environment:** \_\_\_\_\_  
 \_\_\_\_\_  
 \_\_\_\_\_

- **Cold environment:** \_\_\_\_\_  
 \_\_\_\_\_  
 \_\_\_\_\_

(3 marks)

iii) List **ONE** example of clothing that an elderly person must **NOT** wear in order to avoid the following accidents and problems:

<b>FIRE</b>	
<b>FALLS</b>	
<b>USING THE WHEELCHAIR</b>	
<b>POOR CIRCULATION</b>	

(4 marks)

Blank Page



MATRICULATION AND SECONDARY EDUCATION CERTIFICATE EXAMINATIONS BOARD  
UNIVERSITY OF MALTA, MSIDA

**SECONDARY EDUCATION CERTIFICATE LEVEL**

**MAY 2016 SESSION**

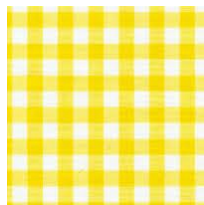
SUBJECT:	<b>Textiles and Design</b>
PAPER NUMBER:	IIB
DATE:	4 <sup>th</sup> May 2016
TIME:	9:00 a.m. to 11:05 a.m.

Answer **ALL** questions.

**Section A (40 marks)**

1. Weaving and knitting are two main ways in which yarns are made into fabric.

a) Gingham and denim are two fabrics made from cotton using different weaving methods.



Gingham



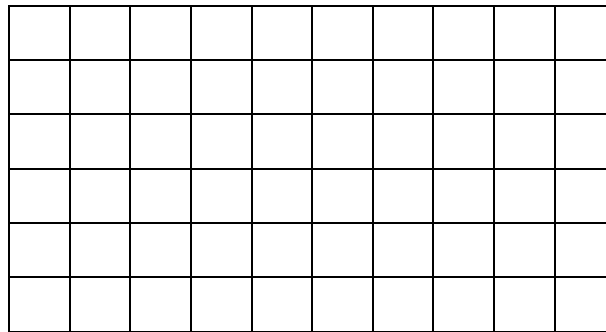
Denim

i) Match the following sentences.

1	Gingham is a		durable and crease easily.
2	In a plain weave the		for curtains, handkerchiefs and aprons.
3	Plain-woven fabrics are		are made using the plain weave.
4	Gingham can be used		plain-woven fabric.
5	Linen and calico		weft yarn goes over the warp yarn and under the next.

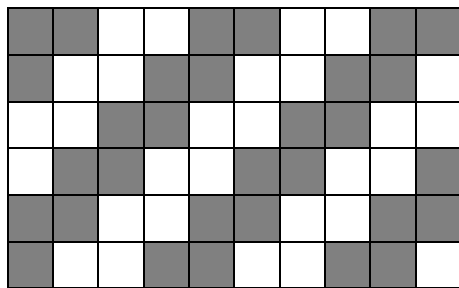
(5 marks)

ii) In the box given below, draw the pattern of a plain weave.



(2 marks)

iii) Denim has the following pattern when woven. State the name of this type of weave.



Name of weave: \_\_\_\_\_

(1 mark)

iv) Circle the **TWO** correct properties about this type of weave.

- Weak      Durable      Strong      Soils easily

(1 mark)

v) Mention **ONE** other fabric made from the weave mentioned in part (iii).

\_\_\_\_\_ (1 mark)

b) Knitting can be grouped into two main types: weft knitting and warp knitting.



i) This sweater was hand-knitted. Name the type of knitting method used to make the sweater.

\_\_\_\_\_ (1 mark)

ii) Knitted fabrics have different qualities from woven fabrics. Complete the following sentences by filling-in the blank spaces with the following words.

*loosely elastic flat resilient warmer*

- Knitted fabrics are more \_\_\_\_\_.
- They are also more \_\_\_\_\_ which allows them to spring back into shape more easily.
- When knitted \_\_\_\_\_ more air can be trapped between the threads, making the fabric \_\_\_\_\_ to wear.
- Knitted fabrics should be dried \_\_\_\_\_.

(5 marks)

iii) Mention **TWO** other items that can be hand knitted.

\_\_\_\_\_

(1 mark)

2. Fabric finishes are applied to fabrics for several reasons.

a) Mention **TWO** reasons for applying finishes to fabrics. *One has been given as an example.*

- To improve the look and feel of a fabric.

- \_\_\_\_\_  
\_\_\_\_\_
- \_\_\_\_\_  
\_\_\_\_\_

(2 marks)

b) A friend is participating in a car racing competition. His racing driver suit is treated with Proban®.

i) Why is this finish applied to the racing driver suit? *Underline the correct answer.*

- To make the racing suit more shiny.
- To make the racing suit flame-retardant.
- To make the racing suit water-proof.

(1 mark)

ii) Circle **ONE** other similar treatment that can be applied commercially.

Mitin                  Scotchguard                  Pyrovatex CP                  Zepel

(1 mark)

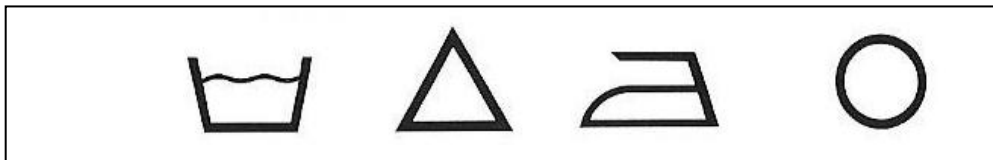
iii) Mention **TWO** other items to which this finish could be applied.

\_\_\_\_\_

(2 marks)

iv) Read the following care label and complete the symbols below.

The racing suit should be washed in warm water using a soapless detergent. Do not use bleach. Iron using warm temperature. It can be dry cleaned.



(4 marks)

c) Flannellette is made by brushing cotton.

i) Explain the process of brushing cotton. Include the following key terms:

*hairy surface - fine wire bristles - nap - air*

\_\_\_\_\_  
 \_\_\_\_\_  
 \_\_\_\_\_

(4 marks)

ii) Complete the sentence by circling the correct answer in the brackets.

- Brushed cotton is (cool, warm, uncomfortable) to wear.
- Brushed cotton burns (very slowly, slowly, quickly, very quickly).
- Brushed cotton is (soft, itchy, rough) to the touch.

(3 marks)

d) The care label of some garments with a water-repellent finish may only be dry cleaned.

Mention **TWO** steps to keep in mind when preparing clothes for dry cleaning.

- \_\_\_\_\_
- \_\_\_\_\_

(2 marks)

3. Your best friend received a colourful, hand-made silk scarf on her birthday.

a) List **TWO** ways how your friend can take care of the scarf when NOT wearing it.



- \_\_\_\_\_
- \_\_\_\_\_

(2 marks)

b) Explain the method of removing a stain from the silk scarf.

\_\_\_\_\_

\_\_\_\_\_

\_\_\_\_\_

(2 marks)

*Please turn the page.*

**Section B (60 marks)**

4. All sheer fabrics require special handling.

a) Mention **TWO** types of sheer/semi-transparent fabrics.

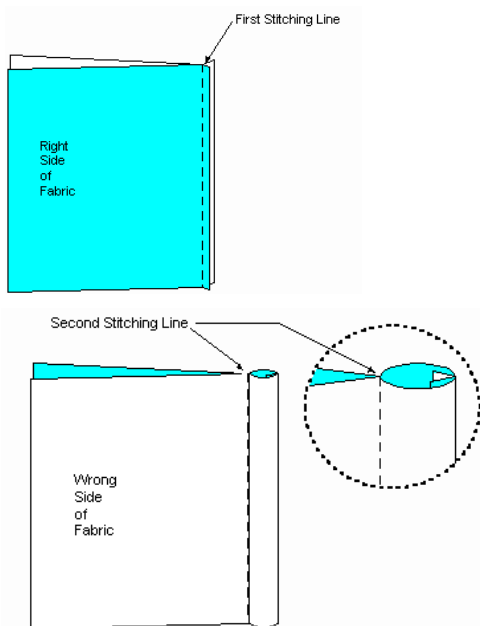
\_\_\_\_\_ (2 marks)

b) Match the **FACTORS** that need to be considered in each of the following **STAGES** when using sheer/semi-transparent fabric.

Stage	Factor to consider
1. Laying out fabric	Use pen/pencil and chalk OR use tailor's tacking.
2. Cutting	Check the amount of heat that the fabric can withstand.
3. Marking	Tape tissue paper the length and width of the fabric and pin the sheer to the paper.
4. Sewing	Make sure the scissors are sharp. Baste the fabric layers together.
5. Pressing	Loosen the machine tension slightly and use a size 8 to 11 (60 to 75) universal needle.

(5 marks)

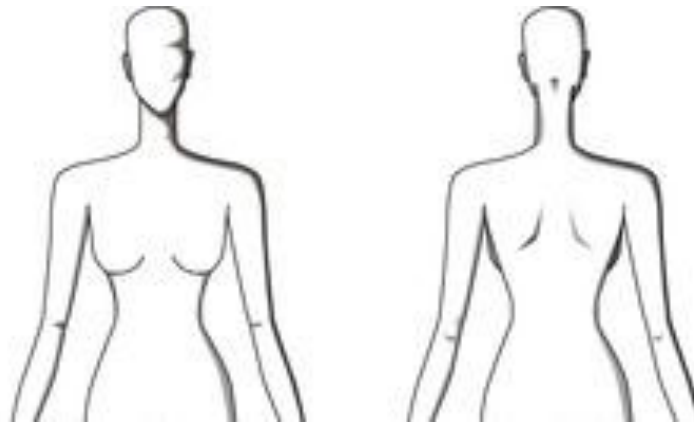
c) A French seam is suitable for lightweight and sheer fabrics. In **FOUR** simple steps, explain how to make a French seam.



- \_\_\_\_\_
- \_\_\_\_\_
- \_\_\_\_\_
- \_\_\_\_\_
- \_\_\_\_\_

(4 marks)

- 
- d) i) You plan to sew a sheer top for your friend to wear on her birthday. On the figure template below, draw the front and the back view of the sheer top. (4 marks)
- ii) Label **THREE** style features that provide texture and make the top less transparent. (3 marks)



**FRONT VIEW**

**BACK VIEW**

- iii) Explain why the garment needs to hang for at least one day before marking the hemline.

---

---

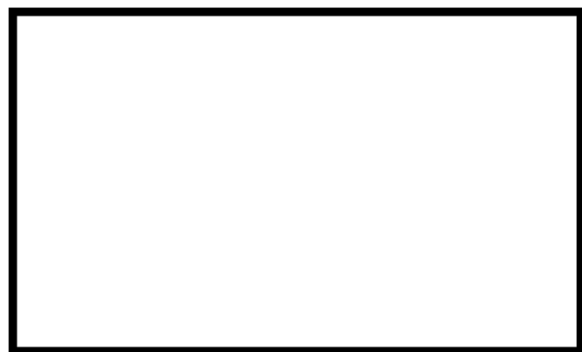
(2 marks)

5. One way of adding design to fabrics is by using embroidery stitches.

- a) In the sketches given below, show how to decorate a cushion and a place mat using your embroidery skills. (4 marks)



Cushion



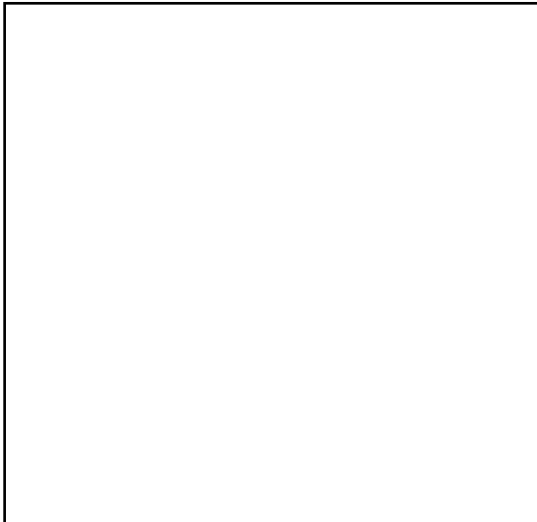
Place mat

i) Name **TWO** embroidery stitches which you designed in part (a) above.

\_\_\_\_\_ (1 mark)

ii) Using diagrams, describe how to work **ONE** embroidery stitch mentioned in part (i)

Name of embroidery stitch: \_\_\_\_\_



Method of working the embroidery stitch:

- \_\_\_\_\_
- \_\_\_\_\_
- \_\_\_\_\_

(3 marks)

iii) Tick **TWO** (✓) small pieces of equipment used to make the embroidery stitches.

<b>Crewel needle</b>		<b>Wax</b>		<b>Hook</b>		<b>Embroidery hoop</b>	
--------------------------	--	------------	--	-------------	--	------------------------	--

(1 mark)

iv) Name **TWO** colours that will be used for the cushion in part (i).

\_\_\_\_\_ (1 mark)

b) Another way of decorating fabrics is by using dyes.

i) How should you prepare the fabric before applying tie and dye? Give a reason for your answer.

\_\_\_\_\_  
\_\_\_\_\_

(1 mark)



ii) Put in the correct order the following steps of how to make tie and dye. *The first two have been done for you.*

	Tie the fabric with strings in patterns.
	Put the wet fabric in the dye and stir well until the fabric is warm.
<b>1</b>	Prepare the dye solution: Put the dye in the water. Add some salt.
	Wet the fabrics so that it will take the dye better by absorbing the coloured water more evenly.
<b>2</b>	Boil the mixture until you get a nice colour.
	Rinse the fabric thoroughly. Dry the fabric and cut out the strings.
	Leave the fabric in the dye for at least 10 to 12 hours.

(6 marks)

iii) Draw and explain how you would add a tie and dye design pattern to the cushion.



---



---



---



---



---

(3 marks)

6a) Your sister has lost weight and needs some advice on how to create a new wardrobe.

i) List **THREE** steps she should follow before buying clothes. *One has been given as an example.*

- *Make a list of the essential pieces of clothing she really needs.*

- \_\_\_\_\_
- \_\_\_\_\_
- \_\_\_\_\_

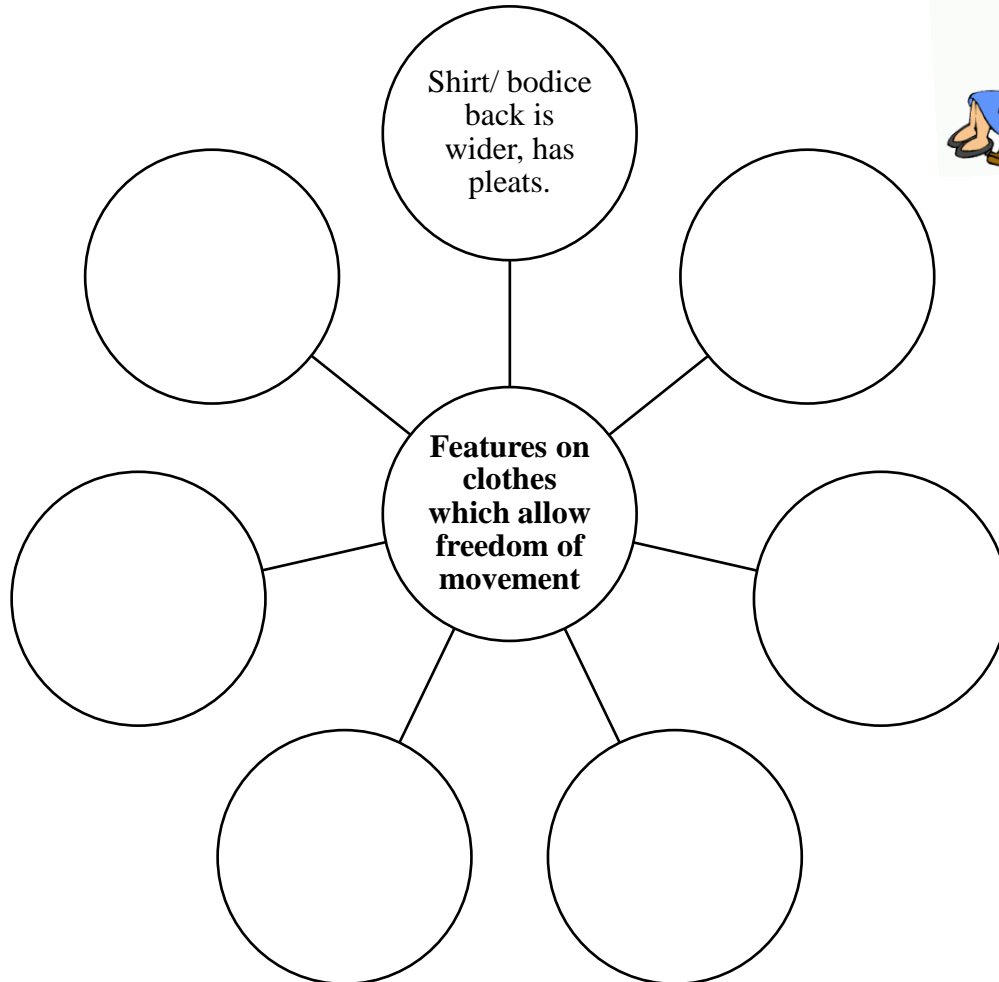
(3 marks)

ii) Tick (✓) **SIX** important items of clothing she must have in her wardrobe.

1	Black dress		7	Blue jeans/ trousers	
2	Waterfall cardigan		8	Button down neutral shirt	
3	Black blazer		9	Cropped trousers	
4	Knitted green jersey		10	Pink blazer	
5	White cardigan sweater		11	Knee-length black skirt	
6	Floral skater dress		12	Black leather trousers	

(3 marks)

- b) i) An elderly neighbour who lives on her own has asked your advice on the type of comfortable clothes that are suitable for her. Continue the following web-diagram by listing various features on clothes which provide freedom of movement. *One has been given as an example.* (6 marks)



- ii) Give **TWO** ideas on what she can wear for warm and cold environments.

- **Warm environment:** *E.g. Light-weight sweaters and jackets.*

---

---

- **Cold environment:** *E.g. Clothes that can be layered.*

---

---

(4 marks)

*Please turn the page.*

---

iii) List **TWO** examples of clothing she must **NOT** wear:

- in order to avoid the falls;
- when using the wheelchair.

<b>FALLS</b>	<hr/> <hr/> <hr/>
<b>USING THE WHEELCHAIR</b>	<hr/> <hr/> <hr/>

(4 marks)