



**L-Università
ta' Malta**

MATRICULATION AND SECONDARY EDUCATION CERTIFICATE
EXAMINATIONS BOARD

**SECONDARY EDUCATION CERTIFICATE LEVEL
2023 SUPPLEMENTARY SESSION**

SUBJECT: **Media Literacy Education**
 PAPER NUMBER: Synoptic – Unit 1
 DATE: 2nd November 2023
 TIME: 8:30 a.m. to 10:35 a.m.

COPIES OF COLOURED PICTURES/FIGURES ARE ATTACHED.

**THIS PAPER SHOULD BE RETURNED TO THE INVIGILATOR
AFTER THE EXAMINATION.**

For examiners' use only:

Question	1	2	3	4	5	6	7	8	Total
Score									
Maximum	6	8	12	8	8	8	8	12	70

Answer **ALL** questions in the space provided.

Scenario

- Abigail is a junior photographer.
- She is interested in branching out into wedding photography.
- She has started researching other wedding photographers' work for inspiration.

Question 1

K-2 (6 marks)

a. Define the terms 'media text' and 'media genre':

i. Media text: _____
_____ (1)

ii. Media genre: _____
_____ (1)

b. List **TWO** types of media texts apart from magazine features.

i. Media text 1: _____ (0.5)

Media text 2: _____ (0.5)

ii. List **TWO** types of media genres apart from news and current affairs.

Media genre 1: _____ (0.5)

Media genre 2: _____ (0.5)

c. 'Style' and 'type of lighting' are characteristics of media texts and media genres. Describe these **TWO** characteristics.

_____ (2)

6

Question 2

K-4 (8 marks)

a. Define the term 'media audience'.

_____ (2)

b. Apart from babies, list **TWO** other types of media audiences which could be targeted.

Type of Audience 1: _____ (1)

Type of Audience 2: _____ (1)

c. Outline the following **TWO** aspects of media audiences:

Geographic location: _____

_____ (2)

Faith: _____

_____ (2)

8

Question 3

C-3 (12 marks)

a. Identify **ONE** different cultural representation found in each of the following media texts.

	Media text	Cultural representation
i.		<p>_____ (1)</p>

Figure 1: (Source: <https://www.cavaliergalleries.com>)

<p>ii.</p>	 <p>Figure 2 : (Source: https://thisisreportage.com)</p>	<p>_____ (1)</p>
<p>iii.</p>	 <p>Figure 3: (Source: https://thisisreportage.com)</p>	<p>_____ (1)</p>
<p>iv.</p>	 <p>Figure 4: (Source: https://rogerspictures.com)</p>	<p>_____ (1)</p>

b. Describe how any **TWO** cultural representations identified in Question 3a are impacted by the related media texts.

Cultural representation 1: _____

_____ (2)

Cultural representation 2: _____

_____ (2)

c. Media plays a significant role in shaping our ideas about cultural representation which might influence our behaviour. Discuss how a cultural representation influences **TWO** ideas and **TWO** behaviours.

_____ (4)

12

Question 4

K-6 (8 marks)

a. Define the term 'mise-en-scène'.

(2)

b. List **TWO** elements that can be found in a mise-en-scène.

Element 1: _____ (1)

Element 2: _____ (1)

c. Refer to the following image from the series "The Crown" showing the wedding of Queen Elizabeth II.



Figure 5: The Crown (Source: <https://www.facebook.com/TheCrownNetflix>)

Describe how mise-en-scène elements in this scene have any of the following **TWO** impacts:

- Generating a sense of time
- Generating a sense of space
- Suggesting a character's state of mind
- Setting a mood

b. Outline the relationship between ISO sensitivity and noise.

(2)

c. Describe the relationship between shutter speed and aperture in order to achieve the effects shown in each of the following **TWO** situations:

Situation 1



Figure 7: (Source: <https://www.openapphoto.com>)

Situation 2



Figure 8: (Source: <https://www.worldsbestweddingphotos.com>)

Situation 1: Figure 7:

The scope: To capture the movement of light in a wedding to form the word 'LOVE'.

Available light: Main light and continuous source of light to create 'LOVE'.

(2)

Situation 2: Figure 8:

The scope: To focus on the guests' facial expressions.

Available light: Natural

(2)

Question 6

K-9 (8 marks)

a. List **TWO** different types of lenses, apart from the wide-angle lens.

Lens 1: _____ (1)

Lens 2: _____ (1)

b. Outline the purposes of the **TWO** types of lenses listed in Question 6a.

Purpose of lens 1: _____
_____ (1)

Purpose of lens 2: _____
_____ (1)

c. Depth of field and subject distance are two key characteristics of lenses. Describe these **TWO** characteristics of lenses.

Depth of field: _____

_____ (2)

Subject distance: _____

_____ (2)

8

Please turn the page.

Question 7

K-10 (8 marks)

a. Define the terms 'colour temperature' and 'white balance'.

Colour Temperature: _____
_____ (1)

White Balance: _____
_____ (1)

b. State the use of Auto and Tungsten white balance settings in photography.

i. Use of Auto: _____

_____ (1)

ii. Use of Tungsten: _____

_____ (1)

c. Identify the correct colour temperature that can be used in the following specific light conditions:

2000K	5500K	3000K	2700K	6500K
-------	-------	-------	-------	-------

Temperature for Halogen: _____ (2)

Temperature for Candlelight: _____ (2)

8

Question 8

C-5 (12 marks)

Figure 9 shows a documentary story of Sarah and Craig’s wedding day by Stuart James.

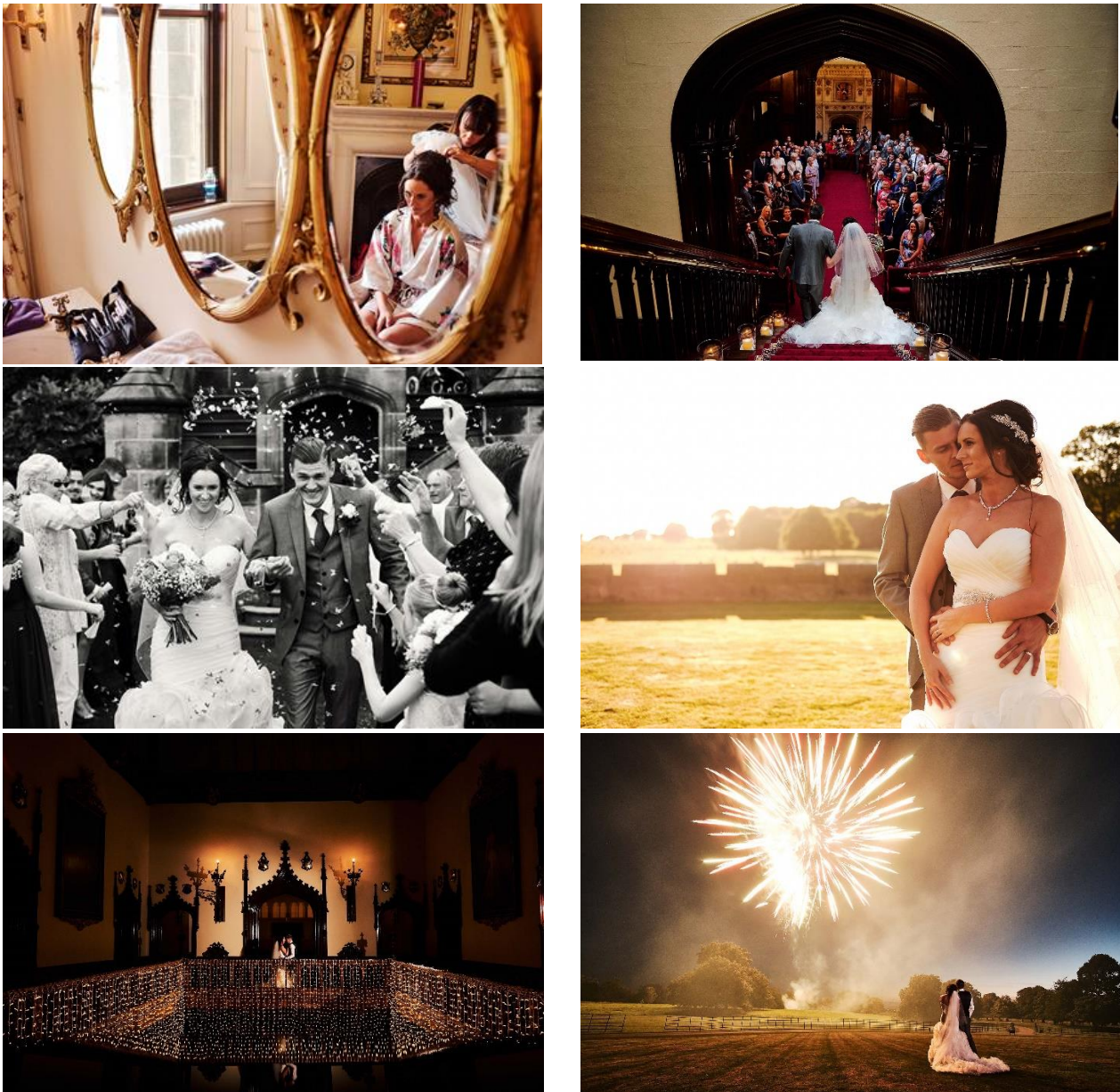


Figure 9: (Source: <https://www.stuartjamesphoto.co.uk>)

a. Identify the **FOUR** components which constitute the image narrative of Sarah and Craig’s wedding photos shown in Figure 9.

Component 1: _____ (1)

Component 2: _____ (1)

Component 3: _____ (1)

Component 4: _____ (1)

b. Explain how **TWO** light conditions impact the narrative of Sarah and Craig’s wedding photos shown in Figure 9.

Light Condition 1: _____

_____ (2)

Light Condition 2: _____

_____ (2)

c. Discuss how **TWO** principles of composition can be used to highlight the narrative of Sarah and Craig’s wedding photos shown in Figure 9.

_____ (4)