



L-Università  
ta' Malta

MATRICULATION AND SECONDARY EDUCATION CERTIFICATE  
EXAMINATIONS BOARD

**SECONDARY EDUCATION CERTIFICATE LEVEL  
2021 SUPPLEMENTARY SESSION**

---

SUBJECT:	<b>Fashion and Textiles</b>
PAPER NUMBER:	Synoptic – Unit 2
DATE:	1 <sup>st</sup> November 2021
TIME:	9:00 a.m. to 11:05 a.m.

---

**THIS PAPER SHOULD BE RETURNED TO THE INVIGILATOR  
AFTER THE EXAMINATION.**

Answer **ALL** questions in the space provided.

**Scenario**

- A theatre company has advertised a vacancy for a Costume Designer.
- Applicants who applied for the job have to carry out some research about different fashion designers.

**Question 1**

**K-2 (6 marks)**

Christian Dior, Versace, Vivienne Westwood and Calvin Klein are four very prominent fashion designers with different styles.

a. Name **TWO** other fashion designers of the 20<sup>th</sup> and 21<sup>st</sup> century.

Fashion designer 1: \_\_\_\_\_ (1)

Fashion designer 2: \_\_\_\_\_ (1)

b. Match the following **FOUR** fashion designers to their country of origin by drawing a line between them.

Name of Fashion Designer
Christian Dior
Versace
Vivienne Westwood
Calvin Klein

Country of Origin
Italy
USA
France
United Kingdom

(2)

c. Describe the difference in style of the following **TWO** fashion designers.

Christian Dior	Calvin Klein
----------------	--------------

---



---



---



---



---



---



---

---

---

---

---

---

---

---

---

---

---

**Question 2**

**K-3 (8 marks)**

a. List the **FOUR** body shapes.

- Body shape 1: \_\_\_\_\_ (0.5)
- Body shape 2: \_\_\_\_\_ (0.5)
- Body shape 3: \_\_\_\_\_ (0.5)
- Body shape 4: \_\_\_\_\_ (0.5)

b. Name **TWO** formal elements and **TWO** design principles in fashion.

- Formal Element 1: \_\_\_\_\_ (0.5)
- Formal Element 2: \_\_\_\_\_ (0.5)
- Design Principle 1: \_\_\_\_\_ (0.5)
- Design Principle 2: \_\_\_\_\_ (0.5)

c. All body shapes require specific types of clothing styles.



Describe **TWO** formal elements in fashion that are used in relation to this body shape.

---

---

---

---

---

---

Source: <https://www.berawaluxe.com>

***This question continues on the next page.***

---

---

---

---

---

---

**Question 3**

**K-4 (8 marks)**

- Applicants are very skilled in figure drawing. An exercise found online, tackled the eight and a half heads in figure drawing.

a. Name **FOUR** different body portions in eight and a half figure drawings.

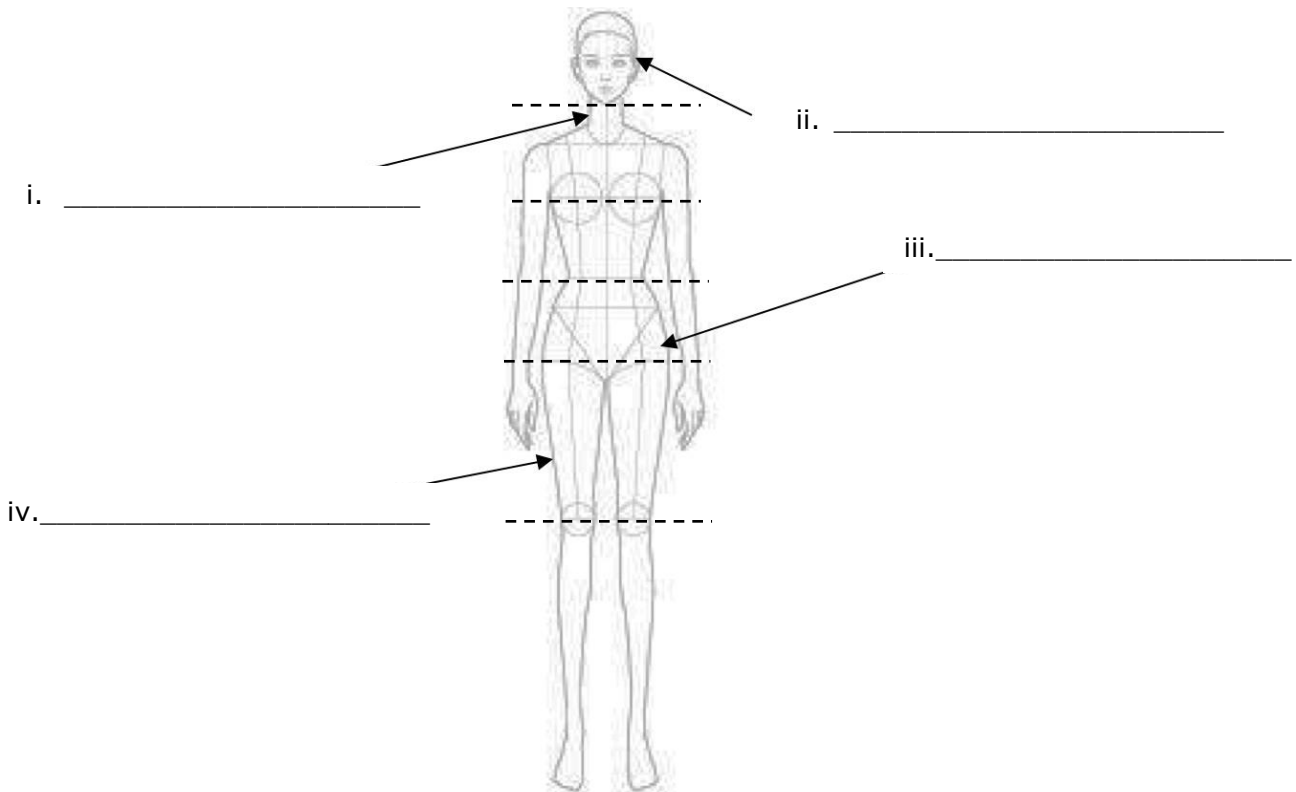
Body portion 1: \_\_\_\_\_ (0.5)

Body portion 2: \_\_\_\_\_ (0.5)

Body portion 3: \_\_\_\_\_ (0.5)

Body portion 4: \_\_\_\_\_ (0.5)

b. Label the **FOUR** different body portions indicated by arrows in the figure drawing provided below.



(Source: <https://www.pdfprof.com>)

(2)

c. Describe **TWO** purposes of using different head proportions in figure drawings.

---

---

---

---

---

---

---

---

(4)

**Question 4**

**K-6 (8 marks)**

- The Theatre Company has another vacancy for a Costume Maker.

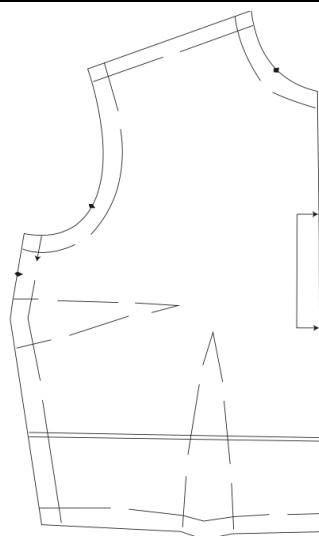
a. List **TWO** types of fashion patterns.

Type of Fashion Pattern 1: \_\_\_\_\_ (1)

Type of Fashion Pattern 2: \_\_\_\_\_ (1)

b. Identify the **TWO** different pattern markings provided below by marking them on the pattern image below using arrows.

Dart	Fold
------	------



(Source: <https://www.aliexpress.com>) (2)

***This question continues on next page.***

---

c. Outline **FOUR** body measurements required for making a pattern.

---

---

---

---

---

---

---

---

---

---

(4)

**Question 5**

**C-3 (12 marks)**

a. Describe how the following **TWO** body measurements should be taken for a shirt.



Arm length: \_\_\_\_\_

---

---

(2)

Neck: \_\_\_\_\_

---

---

(2)

b. Explain **TWO** reasons why pattern markings are important.

Reason 1: \_\_\_\_\_  
\_\_\_\_\_  
\_\_\_\_\_ (2)

Reason 2: \_\_\_\_\_  
\_\_\_\_\_  
\_\_\_\_\_ (2)

c. Discuss the procedure that needs to be adopted before using a flat pattern. Your discussion should include **FOUR** points.

\_\_\_\_\_  
\_\_\_\_\_  
\_\_\_\_\_  
\_\_\_\_\_  
\_\_\_\_\_  
\_\_\_\_\_  
\_\_\_\_\_  
\_\_\_\_\_  
\_\_\_\_\_  
\_\_\_\_\_  
\_\_\_\_\_  
\_\_\_\_\_  
\_\_\_\_\_  
\_\_\_\_\_  
\_\_\_\_\_ (4)

**Question 6**

**K-9 (8 marks)**

a. List **FOUR** methods of disposing of fullness on a skirt or a trousers.

Method 1: \_\_\_\_\_ (0.5)  
Method 2: \_\_\_\_\_ (0.5)  
Method 3: \_\_\_\_\_ (0.5)  
Method 4: \_\_\_\_\_ (0.5)

***This question continues on next page.***

b. Label the following **FOUR** methods of disposing of fullness on a skirt or a trousers.

	<b>Garments</b>	<b>Method of disposing of fullness</b>
i.	 (Source: <a href="https://www.redvalentino.com">https://www.redvalentino.com</a> )	<hr style="width: 100%;"/>    (0.5)
ii.	 (Source: <a href="https://sewingiscool.com">https://sewingiscool.com</a> )	<hr style="width: 100%;"/>    (0.5)
iii.	 (Source: <a href="https://sewingiscool.com">https://sewingiscool.com</a> )	<hr style="width: 100%;"/>    (0.5)
iv.	 (Source: <a href="https://so-sew-easy.com/">https://so-sew-easy.com/</a> )	<hr style="width: 100%;"/>    (0.5)



- c. Describe the process of working gathers using:
  - i. the sewing machine
  - ii. by hand.

---

---

---

---

---

---

---

---

---

---

---

---

---

---

---

---

---

---

---

---

---

---

---

---

(4)

**Question 7**

**K-7 (8 marks)**

- a. List **TWO** functions of CAD.

Function 1: \_\_\_\_\_ (1)

Function 2: \_\_\_\_\_ (1)

- b. Outline the **TWO** functions of CAD given in Question 7a.

Function 1: \_\_\_\_\_

\_\_\_\_\_ (1)

***This question continues on next page.***

Function 2: \_\_\_\_\_

\_\_\_\_\_

\_\_\_\_\_ (1)

c. Describe any **FOUR** points about the importance of digital technology in the fashion and textiles industry.

\_\_\_\_\_

\_\_\_\_\_

\_\_\_\_\_

\_\_\_\_\_

\_\_\_\_\_

\_\_\_\_\_

\_\_\_\_\_

\_\_\_\_\_

\_\_\_\_\_

\_\_\_\_\_

\_\_\_\_\_

\_\_\_\_\_

\_\_\_\_\_

\_\_\_\_\_

\_\_\_\_\_

\_\_\_\_\_

\_\_\_\_\_

\_\_\_\_\_ (4)

**Question 8**

**C-2 (12 marks)**

- During the interview, the manager of the Theatre Company wanted to test whether the candidates were able to identify different clothing styles for particular situations.

a. Identify a clothing style for:

evening wear	costume wear	casual clothing
sports wear	swim wear	business outfit

i. A Human Resources manager attending a meeting with the Directors and CEO:

\_\_\_\_\_ (1)

ii. Two friends meeting for an informal lunch:

\_\_\_\_\_ (1)

iii. A team meeting for a football match:

\_\_\_\_\_ (1)

iv. A couple invited for a dinner dance:

\_\_\_\_\_ (1)

b. Describe **TWO** factors influencing dress etiquette.

Factor 1: \_\_\_\_\_  
\_\_\_\_\_  
\_\_\_\_\_  
\_\_\_\_\_ (2)

Factor 2: \_\_\_\_\_  
\_\_\_\_\_  
\_\_\_\_\_  
\_\_\_\_\_ (2)

***This question continues on next page.***

c. Discuss the style appropriate for a summer sports event organised by a local youth club.

---

---

---

---

---

---

---

---

---

---

(4)